

Driver Installation Under Windows XP

1. **Step 1:** Plug in the USB type A receptacle of the cable to the USB connector of your computer.

Step 2: Place the enclosed CD Driver into the CD ROM.

Step 3: Click “next” at the Found New Hardware Wizard screen.

See Figure 1



Figure 1

2. Select the default location and click “next” to continue.

See Figure 2

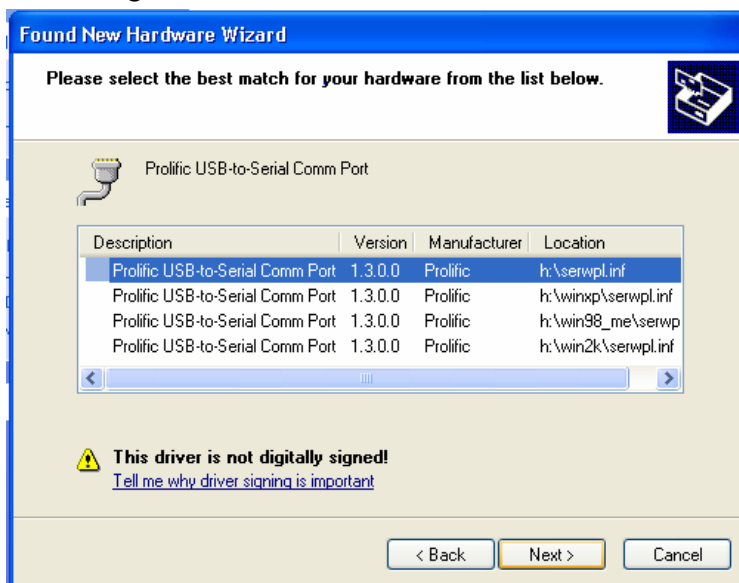


Figure 2

3. Click “**Continue Anyway**” to proceed the installation.
See Figure 3



Figure 3

4. The Wizard has finished installing the software, click “**Finish**” to close the Wizard. See Figure 4.

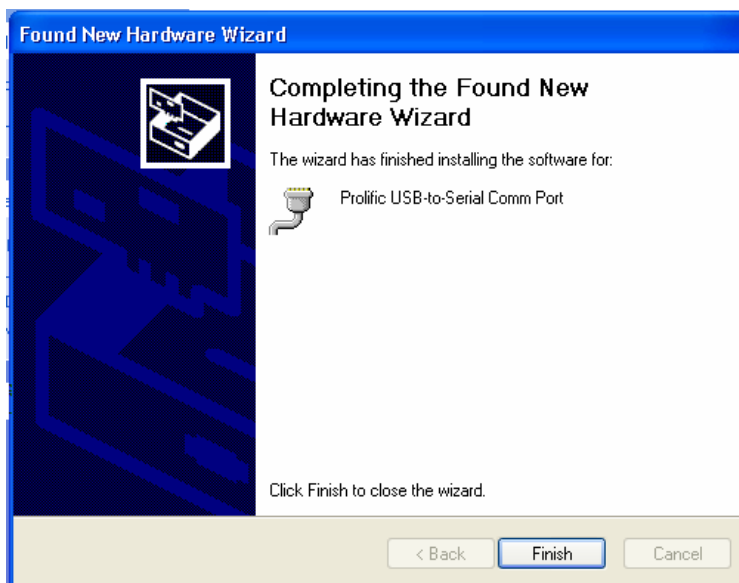


Figure 4

5. Double click “My Computer” →”System Properties”→
”Device Manager” to make sure the device you install is
correctly displayed. See Figure 5

